



S 2 Satellite Speaker

Description

High-end satellite speaker with compact aluminum cabinet. The highly efficient 2.5" neodymium full-range speaker, low bass-reflex tuning and precise electronic linearization gives the S 2 an exceptionally extensive frequency range for its size, along with a precise, clear acoustic pattern. Thanks to the integrated high-pass filter, the S 2 can be directly connected to amplifiers without an additional crossover. With its very low cut-off frequency of 110 Hz, the S 2 can be easily combined with subwoofers without the stereo localization limitations which usually characterize subwoofer satellite systems whose crossover frequency is too high. WS 2 angle brackets can be used to combine two or more S 2 speakers into line arrays with a narrower vertical dispersion angle and longer throw. 0°, 10° and 20° angle brackets are available for this purpose. Subwoofer model SUB 20 A can be combined with the S 2.

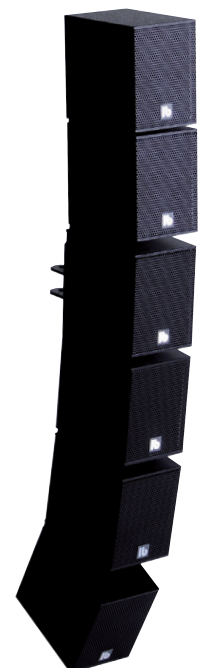
The SUB 20 A active subwoofer is designed for surround systems with AV receivers.

Key Features

- High-end satellite loudspeaker
- 2.5" full-range driver
- 40 watts power capacity
- Wide frequency range
- Low resonant frequency
- Electronic frequency response linearization
- Integrated high-pass filter
- 8 ohms and 100 V versions
- Standard finish: white and black

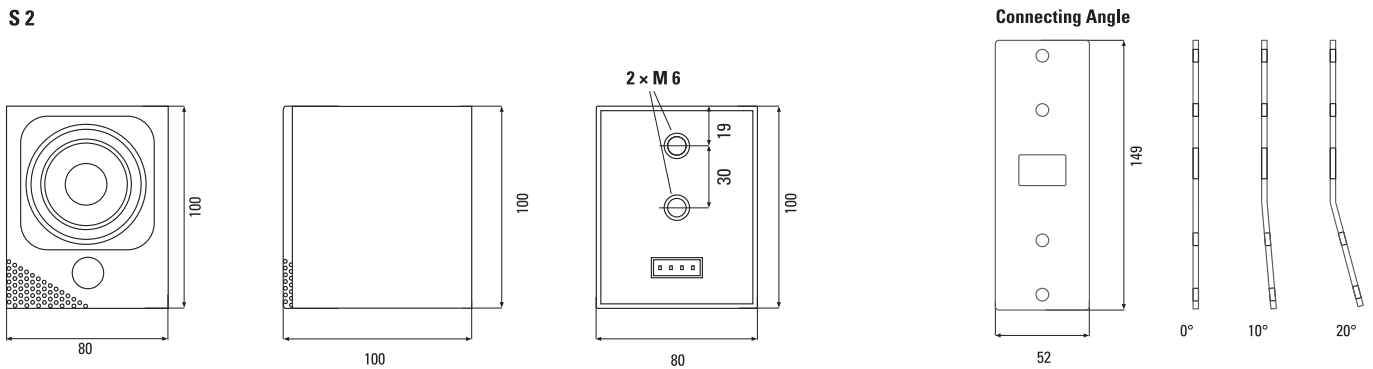
Fields of Application

- Gastronomy, hotels
- Home audio
- Shops, sales rooms
- Surround systems



S 2 Satellite Speaker

Dimensions



Technical Data

Principle	Fullrange speaker with electronic frequency response linearization and integrated high-pass filter, bass-reflex
Components	2.5" neodymium full-range speaker
Frequency range	110 Hz – 22 kHz
Impedance	8 ohms
Power capacity	20 watts RMS, 40 watts program
Sensitivity	83 db (1 W @ 1 m)
Maximum SPL	97 dB @ 1 m, 100 V-Version max. 94 dB
Nominal dispersion	120°
Dimensions	80 x 100 x 105 mm
Weight	0.6 kg, 100 V version: 0.8 kg
Cabinet	Aluminium, powder coated, front precision steel grille
Connectors	Screw-type terminals, pluggable
Warranty	5 years

Model

Order-No. Version

S 2 White	0801-0001	RAL 9016
S 2 Black	0801-0002	RAL 9005
S 2 T White	0801-0003	100 V version
S 2 T Black	0801-0004	Power 2.5/5/10 watts

Other colours and versions on request.

Accessories

Order-No. Version

WH 10 White		7108-0001	Wall-mount for S 2
WH 10 Black		7108-0002	30 mm wall distance
WH 20 White		7108-0003	Wall-mount for S 2
WH 20 Black		7108-0004	60 mm wall distance
WH 40 White		7108-0005	Wall-mount for S 2
WH 40 Black		7108-0006	120 mm wall distance

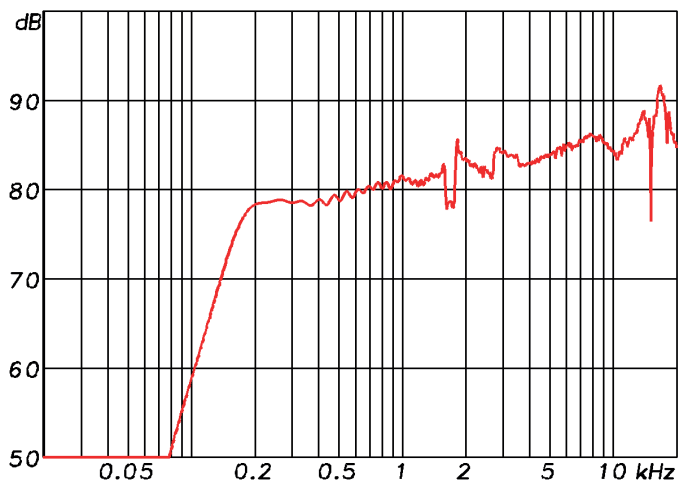
WS2-0° White		7108-0007	Angle bracket 0° for S 2-cluster
WS2-0° Black		7108-0008	Incl. mounting accessories
WS2-10° White		7108-0009	Angle bracket 10° for S 2-cluster
WS2-10° Black		7108-0010	Incl. mounting accessories
WS2-20° White		7108-0011	Angle bracket 20° for S 2-cluster
WS2-20° Black		7108-0012	Incl. mounting accessories



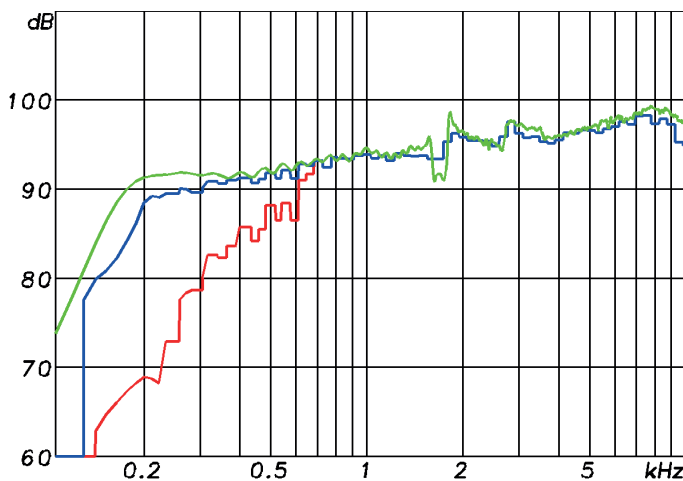
S 2 Satellite Speaker

Measuring Diagrams

S 2 Sens. 2.83V/1m: 81.6 db (100-10k) 164 Hz - 20 kHz (-6 dB) full space



S 2 max. SPL @ 3% and 10% distortion threshold 20 W max. power



S 2 hor. direktivty plot

