



## F 10 PA Speaker

### Description

---

The F 10 is a 2-way PA speaker with a constant dispersion angle of  $80^\circ \times 60^\circ$  and excellent sound properties, even at high playback volumes. Due to the heavy-duty 10" low-mid woofer and the 1" mid-high tweeter with constant directivity characteristics, the F 10 has a very wide frequency range and can be used as a full-range speaker or as a top unit in combination with subwoofers.

We recommend using the subwoofer models B 12 B and B 18 B for this. Due to the multi-purpose cabinet and the hinged horn tweeter, the F 10 can be operated vertically, horizontally or as a floor monitor.

### Key Features

---

- 10" woofer + 1" CD horn
- $80^\circ \times 60^\circ$  (H  $\times$  V) dispersion
- 55 Hz – 19 kHz frequency range
- 122 dB maximum SPL
- Multi-purpose cabinet
- Suitable as floor monitor
- Extensive mounting accessories

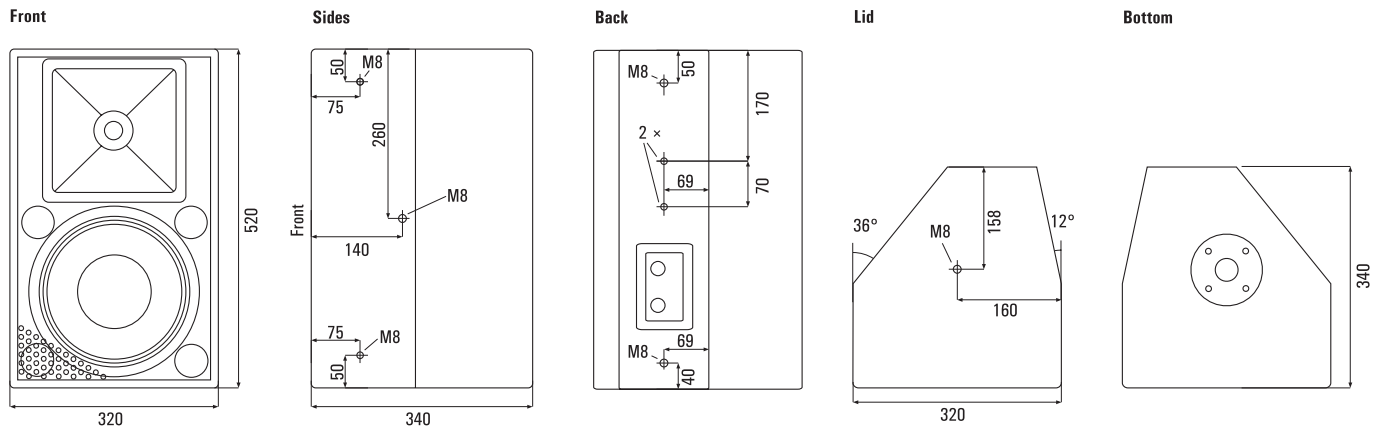
### Fields of Application

---

- Clubs, Discotheques
- Concert halls, theatres
- Monitor applications
- Large rooms, halls
- PA and mobile systems

# F 10 PA Speaker

## Dimensions



## Technical Data




Principle	2-way bass reflex speaker
Components	10" woofer + 1" CD horn
Frequency range	55 Hz – 19 kHz
Impedance	8 ohms
Power capacity	300 watts RMS, 600 watts program
Sensitivity	94 dB (1 W @ 1 m)
Maximum SPL	122 dB @ 1 m
Nominal dispersion (H x V)	80° x 60°
Dimensions (W x H x D)	320 x 520 x 340 mm
Weight	18 kg
Cabinet	Multi-purpose cabinet, plywood, trapezoidal, textured paint, threaded inserts M 8 on sides/on top/at bottom, front metal grille lined with foam, 36° + 12° floor monitor angle
Connections	2 x Speakon
Warranty	5 years

## Model

Model	Order-No.	Version
<b>F 10 Black</b>	1409-0001	RAL 9005, textured paint

Other colours and versions on request

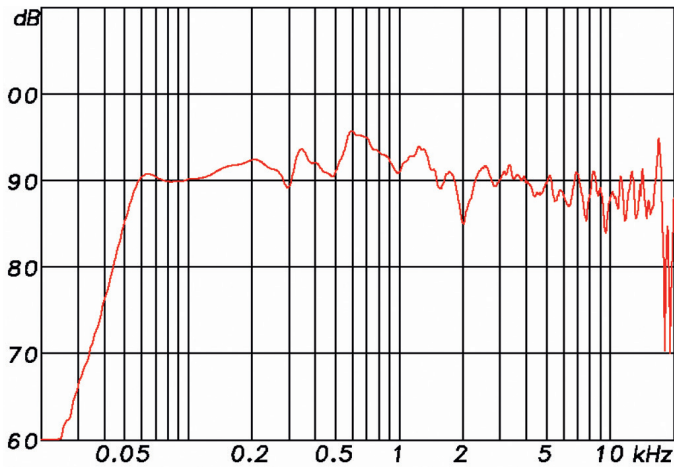
## Accessories

Accessories	Order-No.	Version
<b>UB 10</b> 	7114-0015	U-bracket for vertical installation incl. mounting accessories, powder-coated, black
<b>UB 10 Q</b> 	7114-0016	U-bracket for horizontal installation incl. mounting accessories, powder-coated, black
<b>WH 400</b> 	7114-0031	Wall-mount, powder coated, black

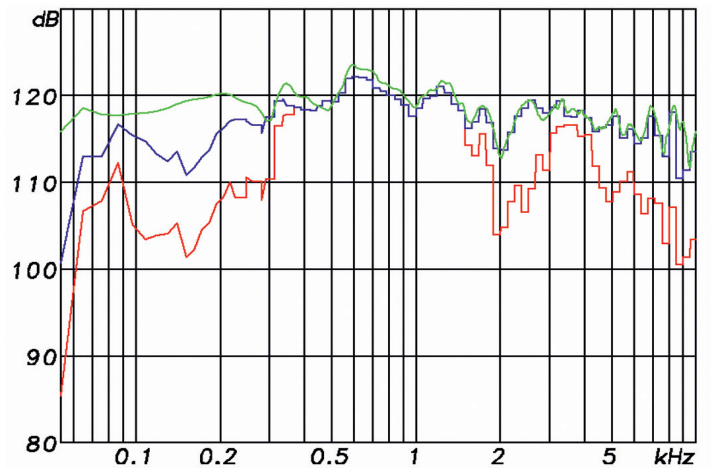
# F 10 PA Speaker

## Measuring Diagrams

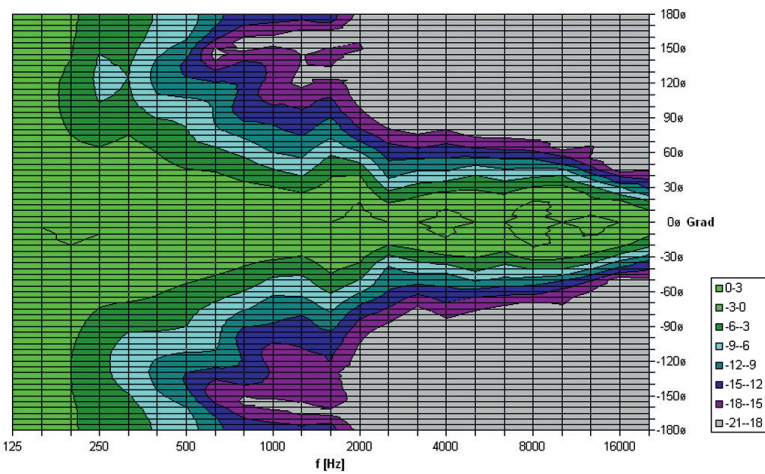
F 10 Sens. 2.83 V/1m: 94 dB (100-10k) 52 Hz - 17,6 kHz (-6 dB)



F 10 max. SPL @ 3% and 10% dist. threshold 800 W max. power



F 10 hor. directivity plot



F 10 vert. directivity plot

